

15330PFX Epic Silver Glitter

89010PFX Epic Gold Glitter

Wilflex™ Epic Silver Glitter and Epic Gold Glitter are specially formulated plastisol inks that are non-phthalate. Epic Silver and Gold Glitter add special effects to garment designs and can be used to enhance graphics or can be used as a unique stand-alone product. The Epic Silver and Gold Glitter give maximum coverage on dark fabrics, producing a dramatic glitter effect with excellent wash durability.

Highlights

- ▶ Specially formulated as a brilliant glitter effect, great for small or large area enhancement for graphics.
- ▶ Excellent stretch properties.
- ▶ Can be used on light or dark grounds. Best on darks.
- ▶ Will not tarnish in wash.

Printing Tips

- ▶ Meshes between 25-40 t/in (10-15 t/cm) are recommended.
- ▶ When possible, S quality thread is suggested due to its smaller diameter resulting in a larger mesh opening.
- ▶ A heavy flood stroke that fully fills the open areas of the stencil with ink is recommended.
- ▶ When using Glitter inks for transfers, use cold peel paper and process. Heat press onto the base at 375°F (190°C).

Compliance

- ▶ Non-phthalate.
- ▶ For individual compliance certifications, please visit www.wilflex.com/compliance.

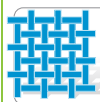
Precautions

- ▶ Perform fusion tests before production. Failure to cure ink properly may result in poor wash fastness, inferior adhesion and unacceptable durability. Ink gel and cure temperatures should be measured using a Thermoprobe placed directly in the wet ink film and verified on the production run substrate(s) and production equipment. It is the responsibility of the printer to determine that the correct ink has been selected for a specific substrate and the application processes meet your customer's standards or specifications.
- ▶ Avoid polyester fabrics where dye migration will occur.
- ▶ Flakes reflect the heat, be sure to check ink temperature with Thermoprobe.
- ▶ Stir plastisols before printing.
- ▶ Do not dry clean, bleach or iron printed area.
- ▶ **NON-CONTAMINATION OF EPIC INKS:** Do not add or mix non-Epic inks, additives or extenders with Epic inks. All buckets, palette knives, stirring apparatus, squeegees, flood bars and screens must be cleaned properly and free of phthalates and pvc containing inks. Non-phthalate emulsions and pallet adhesives must be used. Failure to follow these precautions may cause phthalate contamination in violation of consumer protection laws and regulations.
- ▶ Any application not referred in this product information bulletin should be pre-tested or consultation sought with Wilflex Technical Services Department prior to printing.
- ▶ Email: techserviceswilflex@polyone.com



Fabric Types

100% cotton, cotton blends, some synthetics



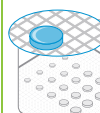
Mesh

Counts: 24-38 t/in (9-15 t/cm)
Tension: 25-35 n/cm²



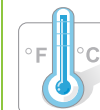
Squeegee

Durometer: 60/90/60
Edge: Rounded
Stroke: Medium
**Do not use excess squeegee pressure.*



Non-Phthalate Stencil

Direct: 2 over 2
Capillary/Thick Film: 50-70 microns
Off Contact: 1/16" (.2cm)



Flash & Cure Temperatures

Flash: 220°F (105°C)
Cure: 300°F (150°C)



Pigment Loading

EQ: 1% max
MX: 1% max
PC: 1% max
**All percentages listed at % by weight.*



Epic Additives

Extender: N/A
Reducer: Epic Viscosity Buster-3% max
**All percentages listed at % by weight.*



Storage

65-90°F (18-32°C)
Avoid direct sunlight.
Use within one year of receipt.



Clean Up

Ink degradant or press wash.



Health & Safety

MSDS: www.polyone.com or
Contact your local CSR.